

# CLINICAL AID

## Add Color to Self-Ligating Systems While Reducing Emergencies

**S**elf-ligating bracket systems, whether passive or active, have two problems for today's patients:

1. They don't allow the use of colorful elastomeric ligatures.
2. Highly flexible initial archwires can work their way out of the terminal bracket slots, resulting in costly emergency visits due to poking wire ends. Even with the recommended small metal stops in place, archwires will shift to one side in some "active chewers" (A).

To solve both issues, we recommend the use of a colorful resin stop on the wire and, where necessary, an occlusal build-up of the same material. Resin stops are not new, but we have given them a facelift by using a colored copolymer with glitter (Twinky Star\*).

The patient can choose from among several colors (B). The procedure is as follows:

1. Find a suitable location that will not interfere with leveling and rotation corrections—usually mesial or distal to the canine. With larger rectangular wires, a slightly larger stop can be used.
2. Isolate the area with a cotton

roll or small cheek retractor, and blow the wire dry.

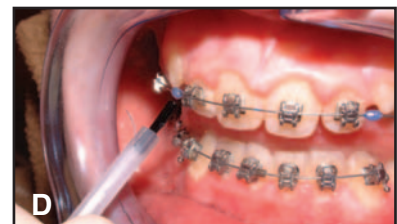
3. Brush a thin coating of a liquid resin such as Transbond primer\*\* onto the chosen spot on the wire, and blow off any excess.
4. Press a small bead of Twinky Star onto the wire with a plier (C).
5. Smooth it with a brush dipped in primer (D).
6. Light-cure the glitter-stop for 10 seconds (E).

For an occlusal build-up, etch the occlusal enamel for 10 seconds, apply the Twinky Star, and smooth it with a brush dipped in primer. Remove the marginal excess with an explorer, then light-cure the resin.

The glitter-stops have become little stars in our office theater—children ask for them even before they sit down. We have also seen fewer emergencies with self-ligating systems.



ROLF MAIJER, DDS, DOrth  
DR. PETER LAMARK  
3121 Wessex Close  
Victoria, BC V8P 5N2  
Canada  
maijer@attglobal.net



\*VOCO GmbH, Cuxhaven, Germany. Distributed by Patterson Dental Supply, Inc., 1031 Mendota Heights Road, St. Paul, MN 55120.

\*\*3M Unitek, 2724 S. Peck Road, Monrovia, CA 91016.